

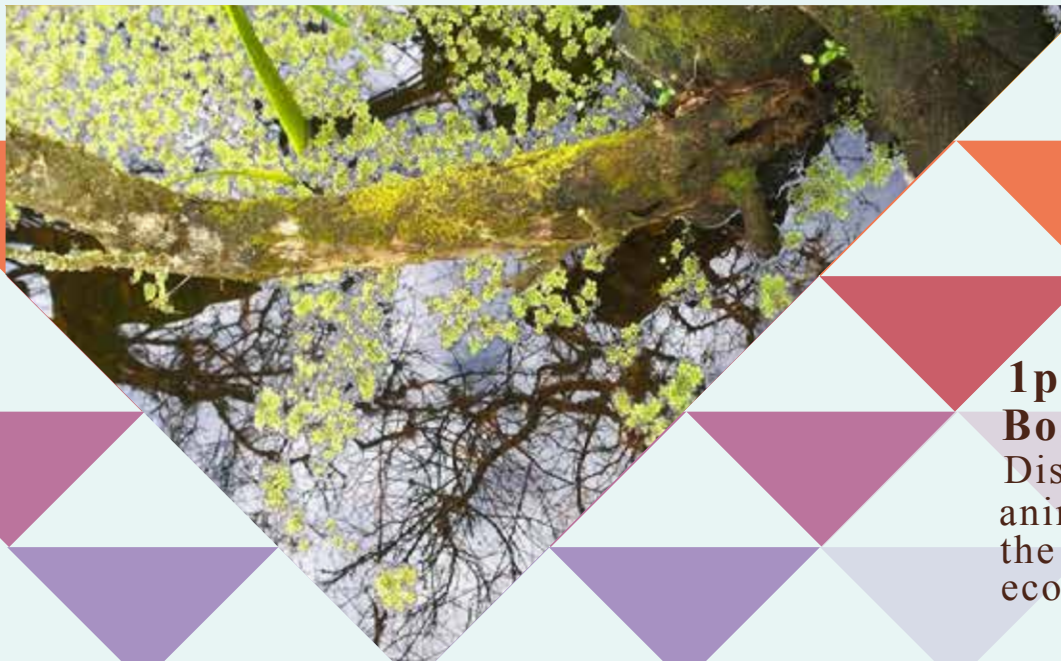
**JOIN US Feb. 18th for Everglades Exploration Day!**

AH-TAH-THI-KI MUSEUM PRESENTS

# ***SEMINOLE Discovery Days***

**Bring your friends and family for fun activities at the Museum!**

*All activities are free for members or included with admission.*



## **ACTIVITIES**

**1pm, 2pm & 3pm**

### **Boardwalk Tour**

Discover the plants and animals of Big Cypress and the unique Everglades ecosystems they call home.

**12pm-4pm**

### **Pop-Up Nature Museum**

Get a feel for nature with our hands-on displays! Skulls, hides and plant activities. Create Everglades-inspired crafts.

**Big Cypress Seminole Indian Reservation**  
34725 West Boundary Rd., Clewiston, FL 33440

[ahtahthiki.com](http://ahtahthiki.com)

(863) 902-1113



SEMINOLE TRIBE OF FLORIDA  
**AH-TAH-THI-KI**  
M U S E U M  
A PLACE TO LEARN. A PLACE TO REMEMBER.

